

# LSD Deputy Report +January 2013

Steve Suhring

January 17, 2013

## Summary

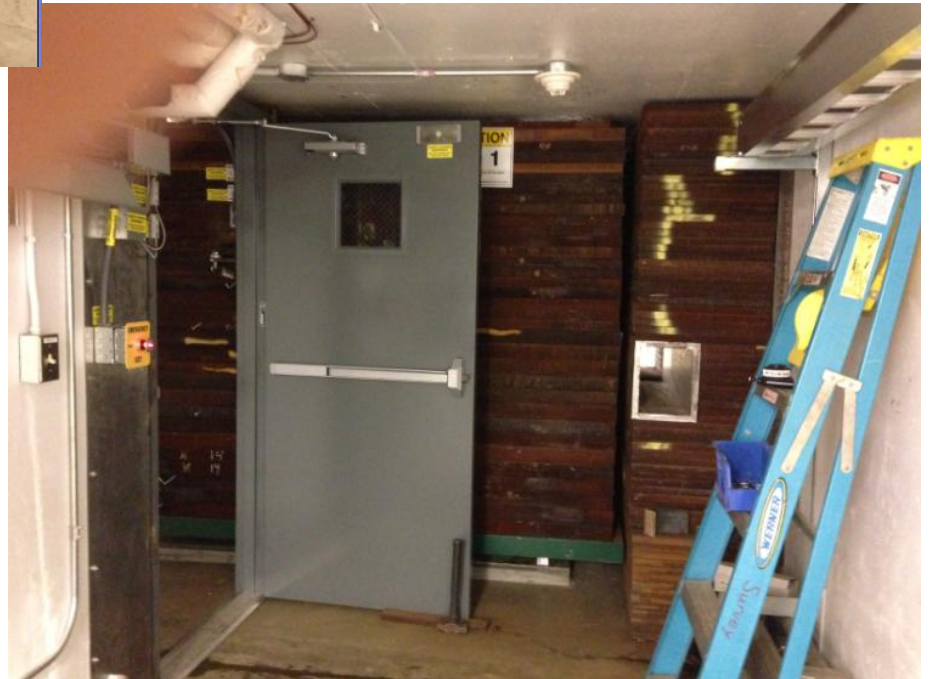
- PEPPo dismantled
- Penetration repair ~85%
- Bldg 68 construction begun
- MCC renovation begun (move to Bldg 87)
- All beam transport stands on site
- 1<sup>st</sup> ZA installed
- Linac valve swaps ~90%

# Summary

- Tagger Wall ~98%
- PSS Certification all but done (finish tonight)
- All U-tubes installed by end of this week
  - Except 0L04 (R100) and 2L21 (old 0L04)
- New CHL cooling tower completed BUT
  - Old underground piping failed
- XD Solenoid ~85K
  - Challenges ahead



1R+ ZA magnet



Tagger wall & door

Abandoned CHL pipe location



Recovery Compressor  
temporary cooling water hoses



# SAD Calendar

Scheduled Accelerator Down

Week 3 2013

Key

- Good Plan
- Tentative Plan
- Major Event
- Incomplete-Task
- Look Up
- Utility Interruption
- Radcon Group
- Special Support
- Subset
- New/Changed
- ATLIS Task

View ATLIS Work Map Help

Login

	Sun	M	T	W	T	F	Sat
3	2013-01-13	14	15	16	17	18	19
Owl	LSD:Suhring	LSD:Suhring	LSD:Suhring	LSD:Suhring	LSD:Suhring	LSD:Suhring	LSD:Suhring
Day		<ul style="list-style-type: none"> <li>SRF CM PM Inj</li> <li>Linac VBV replacement</li> <li>Shunt chassis upgrade</li> <li>RF Zone prep</li> <li>RF PM</li> <li>RF: 1L22+ inst&amp;tst</li> <li>LCW inst: 1S+</li> <li>2S+ bracket prep</li> <li>2R+ mag inst</li> <li>Hall D Tagger - beam</li> <li>Count Hse renovatns</li> <li>S&amp;A XA superharp 2A</li> <li>S&amp;A XD FCal Chmbr</li> <li>Cryomod cooldn</li> <li>NL fill: LHe trailer</li> <li>XD refrig startup</li> <li>RF support to PSS</li> </ul>	<ul style="list-style-type: none"> <li>SRF CM PM Inj</li> <li>Linac VBV replacement</li> <li>Shunt chassis upgrade</li> <li>RF Zone prep</li> <li>RF PM</li> <li>RF: 1L22+ inst&amp;tst</li> <li>LCW inst: 1S+</li> <li>1S+ mag inst</li> <li>S&amp;A: SL girders</li> <li>2S+ cartridges</li> <li>2R+ mag inst</li> <li>Hall D Tagger - beam</li> <li>Count Hse renovatns</li> <li>S&amp;A XA superharp 2A</li> <li>S&amp;A: XD elev. run</li> <li>Cryomod cooldn</li> <li>Lower VARKLYs</li> </ul>	<ul style="list-style-type: none"> <li>Kerr Cell tests</li> <li>SRF CM PM Inj</li> <li>Linac VBV replacement</li> <li>Shunt chassis upgrade</li> <li>RF Zone prep</li> <li>RF PM</li> <li>RF: 1L22+ inst&amp;tst</li> <li>LCW inst: 1S+</li> <li>1S+ mag inst</li> <li>S&amp;A: SL girders</li> <li>2S+ cartridges</li> <li>2R+ mag inst</li> <li>Hall D Tagger - beam</li> <li>Count Hse renovatns</li> <li>S&amp;A: XD elev. run</li> <li>S&amp;A: TLab align piers</li> <li>Cryomod cooldn</li> <li>RF support to PSS</li> </ul>	<ul style="list-style-type: none"> <li>Move tunnel light for leak</li> <li>Linac VBV replacement</li> <li>Shunt chassis upgrade</li> <li>RF Zone prep</li> <li>RF PM</li> <li>RF: 1L22+ inst&amp;tst</li> <li>LCW inst: 1S+</li> <li>1S+ mag inst</li> <li>2R+ mag inst</li> <li>XA Dump Insp</li> <li>Hall D Tagger - beam</li> <li>Count Hse renovatns</li> <li>S&amp;A: XD elev. run</li> <li>S&amp;A: FEL viewer</li> <li>CM u-tubes</li> <li>Cryomod cooldn</li> <li>RF support to PSS</li> </ul>	<ul style="list-style-type: none"> <li>Linac VBV replacement</li> <li>Shunt chassis upgrade</li> <li>1LD9 WG remvl</li> <li>RF Zone prep</li> <li>RF PM</li> <li>RF: 1L22+ inst&amp;tst</li> <li>LCW inst: 1S+</li> <li>W1&amp;W2 stone drop</li> <li>Hall D Tagger - beam</li> <li>Count Hse renovatns</li> <li>Cryomod cooldn</li> <li>RF support to PSS</li> </ul>	<ul style="list-style-type: none"> <li>Cryomod cooldn</li> </ul>
Swing		<ul style="list-style-type: none"> <li>1600 PSS Cert.</li> </ul>	<ul style="list-style-type: none"> <li>1500 PSS Cert.</li> <li>RF support to PSS</li> </ul>	<ul style="list-style-type: none"> <li>1500 PSS Cert.</li> <li>RF support to PSS</li> </ul>	<ul style="list-style-type: none"> <li>&lt;1500 Funct. Cert</li> <li>RF support to PSS</li> </ul>	<ul style="list-style-type: none"> <li>1500 PSS Cert.</li> <li>RF support to PSS</li> </ul>	
4	2013-01-20	21	22	23	24	25	26
Owl	LSD:Suhring	LSD:Suhring <b>JLab Holiday</b>	LSD:Suhring	LSD:Suhring	LSD:Suhring	LSD: Logue	LSD: Logue
Day			<ul style="list-style-type: none"> <li>Shunt chassis upgrade</li> <li>NLD9 stone drop</li> <li>RF Zone prep</li> <li>RF PM</li> <li>RF: 1L22+ inst&amp;tst</li> <li>NL C100 rad meas</li> <li>LCW inst: 1S+</li> <li>Hall D Tagger - beam</li> <li>Tagger vault scaffold inst</li> <li>B68 LCW mods</li> <li>CM u-tubes</li> <li>Cryomod cooldn</li> <li>MCC HVAC&amp;roof</li> </ul>	<ul style="list-style-type: none"> <li>Shunt chassis upgrade</li> <li>RF Zone prep</li> <li>RF PM</li> <li>NL C100 rad meas</li> <li>LCW inst: 1S+</li> <li>Hall D Tagger - beam</li> <li>Tagger vault scaffold inst</li> <li>B68 LCW mods</li> <li>Cryomod cooldn</li> </ul>	<ul style="list-style-type: none"> <li>Shunt chassis upgrade</li> <li>RF Zone prep</li> <li>RF PM</li> <li>LCW inst: 1S+</li> <li>Hall D Tagger - beam</li> <li>Tagger vault scaffold inst</li> <li>B68 LCW mods</li> <li>LHe delivery</li> </ul>	<ul style="list-style-type: none"> <li>Shunt chassis upgrade</li> <li>RF Zone prep</li> <li>RF PM</li> <li>LCW inst: 1S+</li> <li>Hall D Tagger - beam</li> <li>Tagger vault scaffold inst</li> <li>B68 LCW mods</li> <li>2K pumpdown</li> <li>C100-6 to 2L26</li> </ul>	<ul style="list-style-type: none"> <li>Road repair at</li> <li>2K pumpdown</li> </ul>
Swing							